



# a cloud-based integration platform

Integrate | Automate | Transact



2801 Network Blvd. Suite 215, Frisco, Texas 75034 [customer@cintap.com](mailto:customer@cintap.com) +1 (833) 417 0064





# iPaaS for enterprise

The iPaaS market is valued over \$4.5B, with a forecasted growth rate CAGR of 30.3% from now until 2026.

As of 2021, 93% of companies have either already invested in iPaaS or have plans to.



- <https://www.marketsandmarkets.com/Market-Reports/integration-platform-as-a-service-market-134216323.html>
- <https://www.businesswire.com/news/home/20211102005932/en/Market-Study-Reveals-89-of-Companies-Struggle-with-Data-and-System-Integration-Driving-iPaaS-Adoption>





so...

—○ what holds iPaaS back? ○—



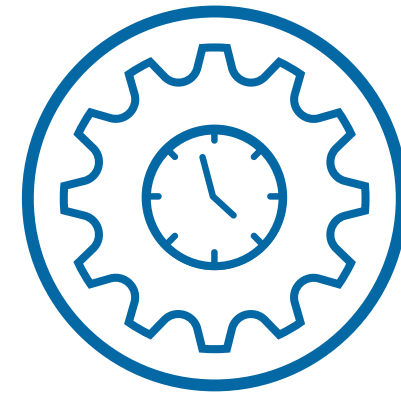
## Maintenance and scaling costs

As your company grows, so does the cost of installing, maintaining, and scaling on-site integration platforms.



## Complicated and lengthy onboarding

It takes weeks or months to integrate and automate all of your systems and workflows.



## Overextended IT teams

Your IT team handles all data transactions, without enough experience of app integration, data security, and compliance standards.

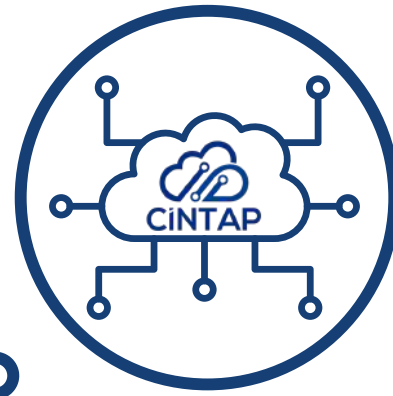






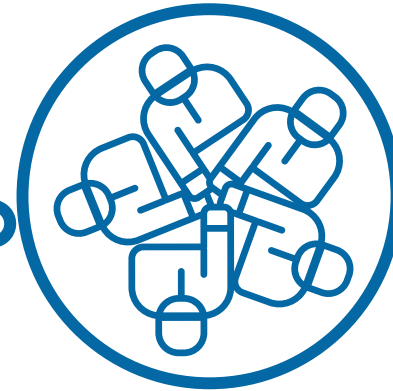
—○ What's the **CINTAP** solution? ○—





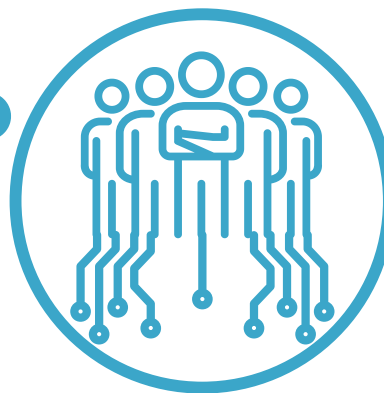
## A Cloud-Based Platform

Streamline, simplify, and scale your A2A and B2B integrations with *no* infrastructure cost, *no* maintenance overhead, and *no* additional EDI charges.



## Onboarding and Partner Networking

Get end-to-end integration with all of your trading partners in a fraction of the time. Build and manage relationships with access and visibility for you *and* your partners.



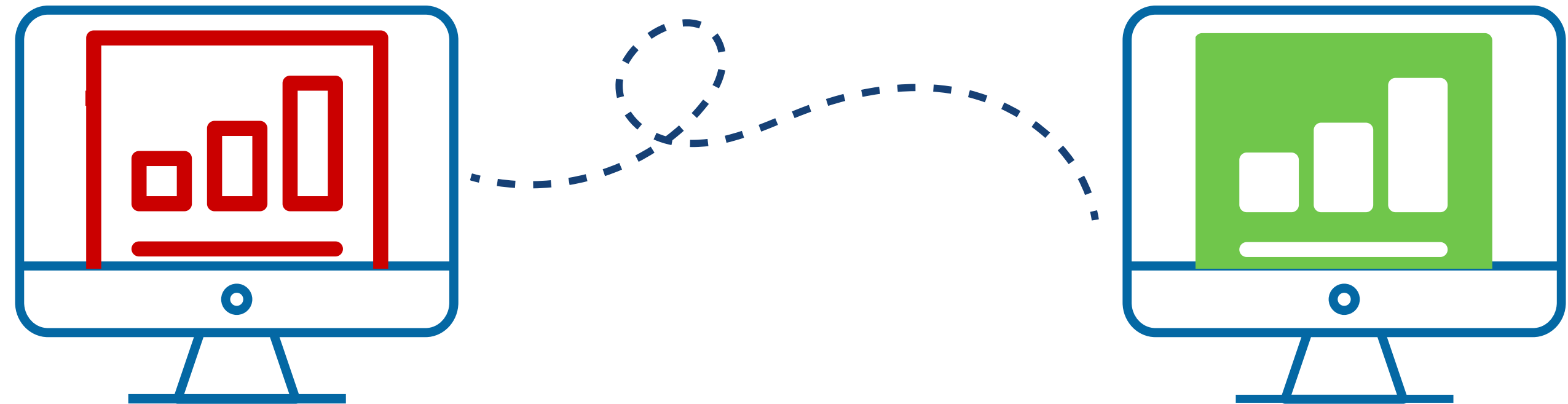
## Integration Managed Services

CINTAP's Managed Services Group is standing by to manage any integration project you have. Take advantage of an *experienced team* dedicated to providing quick, efficient, and successful service within 24-48 hours.

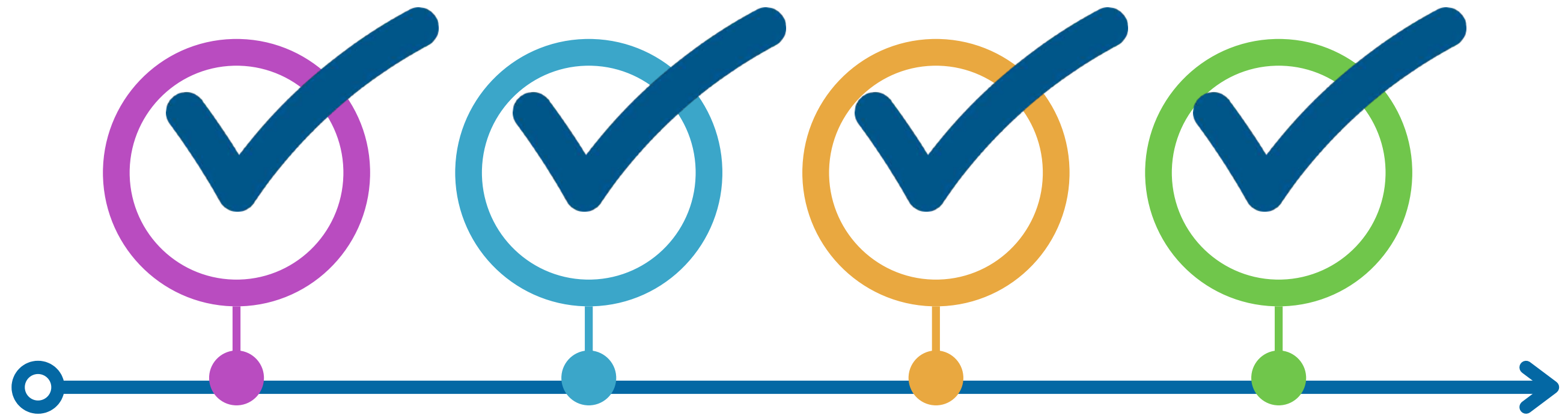


○ INTEGRATE | AUTOMATE | TRANSACT ○

*Standardize* inbound and outbound EDI transactions between systems:  
ERP, CRM, FMS, WMS, and more!

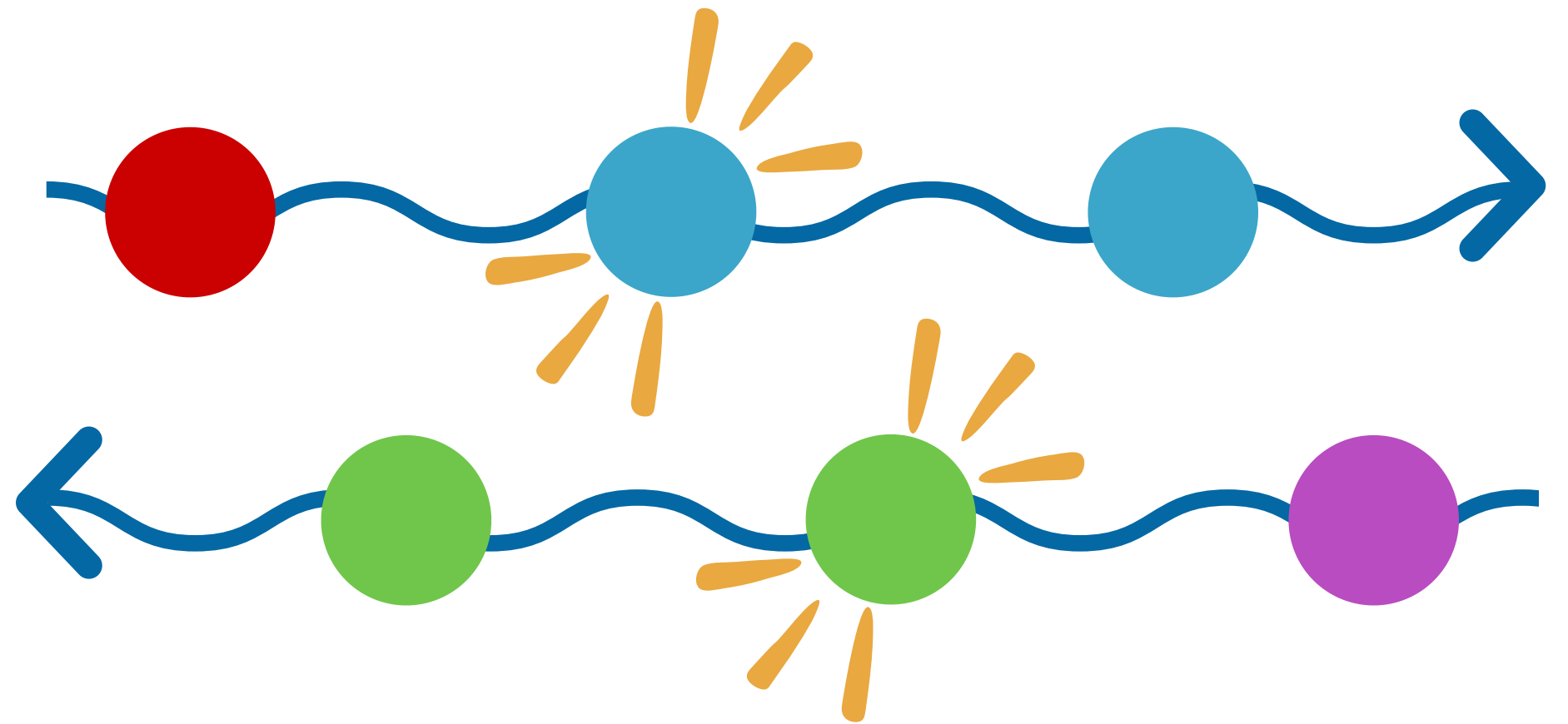


*Boost* efficiency and minimize errors with automated critical manual processes.



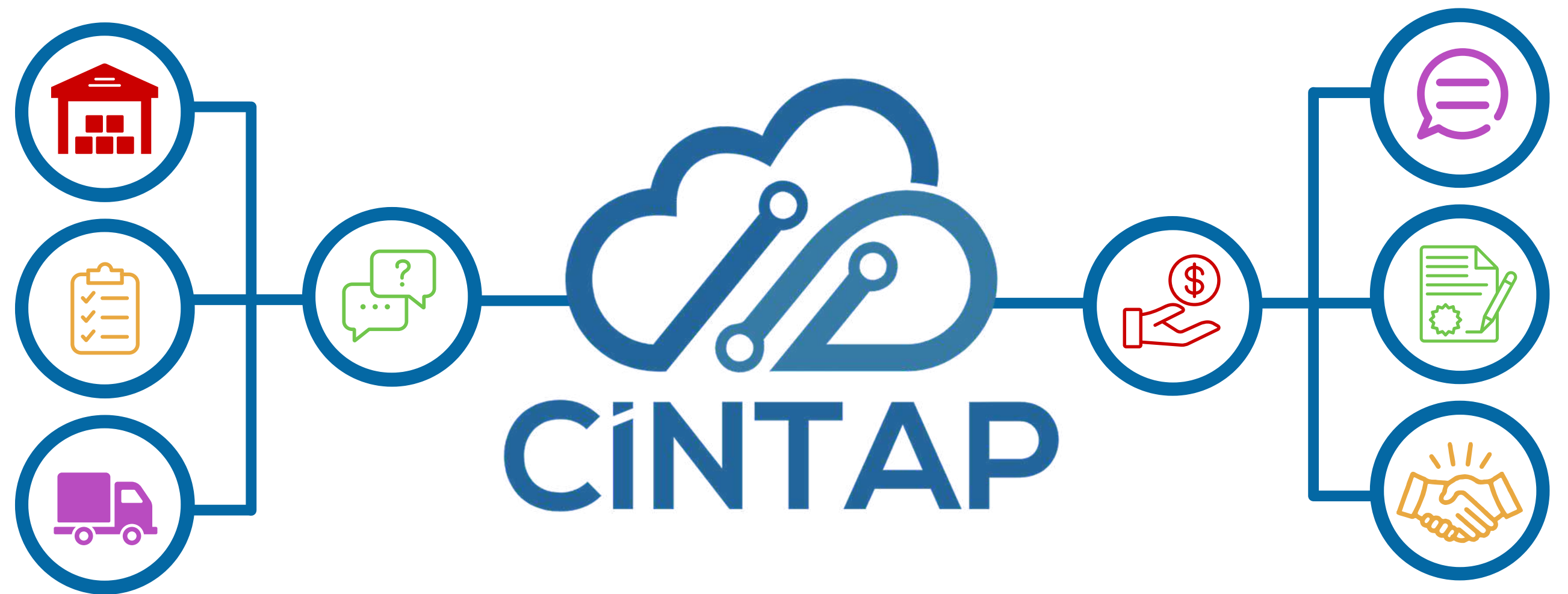


*Reduce* risks for upstream and downstream impacts from change requests.





*Customize* complex and flexible business rules and workflows.





*Profit* from low-cost integration setup, support, and maintenance.







○ CUSTOMIZED to your needs ○



# A2A

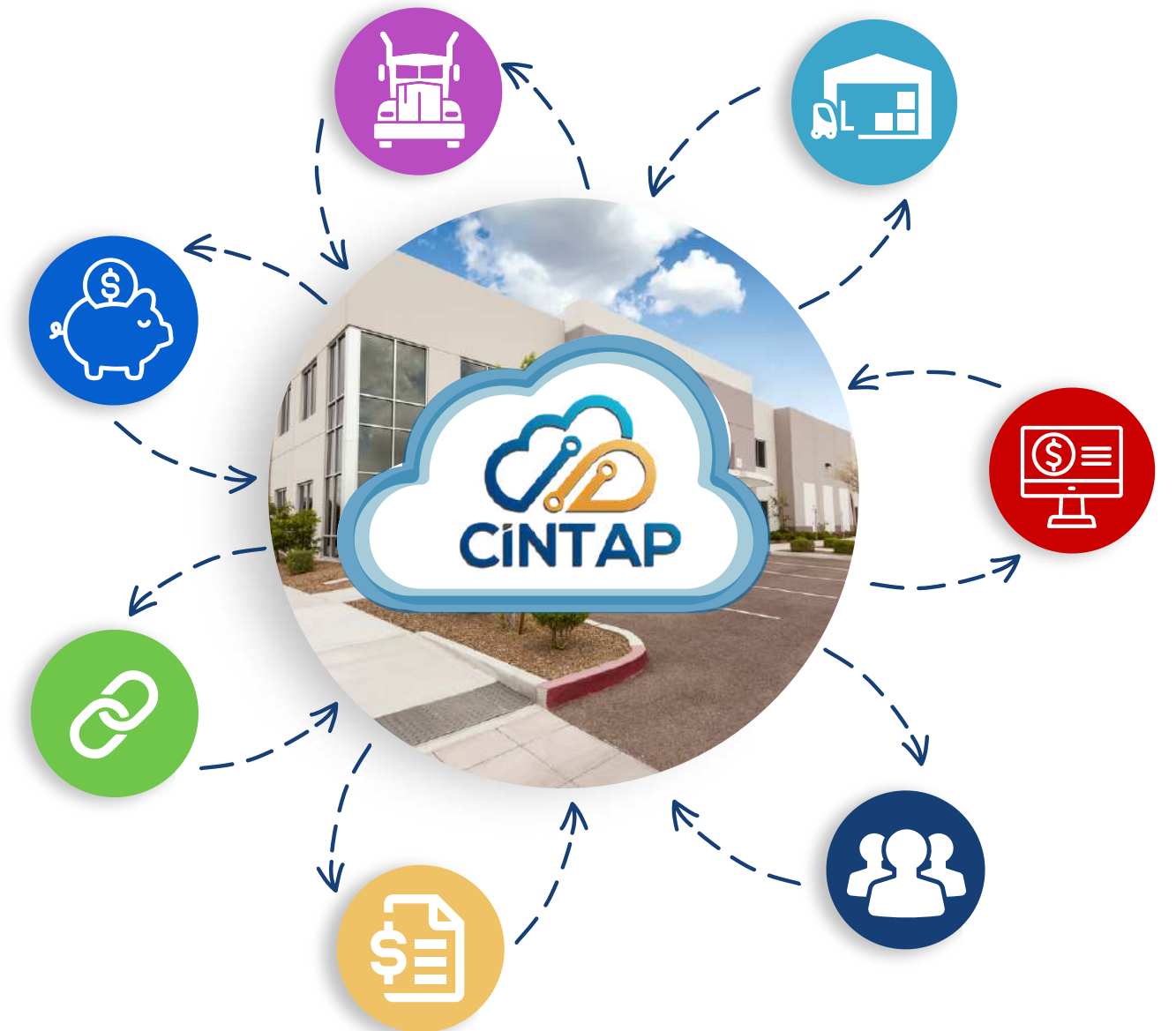
## INTEGRATION





# B2B

## INTEGRATION



CUSTOMIZED

# DASHBOARDS / ALERTS & MONITORING

**A2A**

INTEGRATION



**B2B**

INTEGRATION



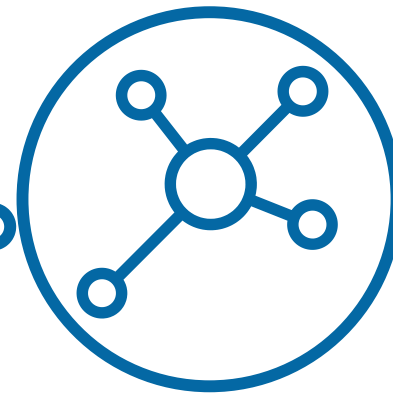
**SINGLE PLATFORM/ENDLESS CAPABILITIES**





## EDI FOR EVERY FORMAT

XML, cXML, JSON, FLAT FILE, and more!



## UNLIMITED CONNECTION OPTIONS

REST API, FTP, SFTP, JDBC, HTTP, HTTPS, or anything else!



## BI TAILORED TO YOU

Customizable and interactive UI screens, forms, and reports.  
View your data and trends on one page!



# 70% of our customers switched to CINTAP because we can cater to any business model.

"We have been able to centralize our whole business on a single platform, creating an entirely unified experience for our customers. With CINTAP Cloud, we have increased our sales by streamlining processes, and we have cut down our excessive costs that impacted our bottom line. We have onboarded the entire enterprise in a matter of just a few days. CINTAP Cloud has proven to be very scalable and very flexible for our business."

-Jimmy, EDI Architect and CINTAP Client





Sales

+1(833) 417-0064

Technical Support

[customercare@cintap.com](mailto:customercare@cintap.com)



Let's *simplify* your solution.

